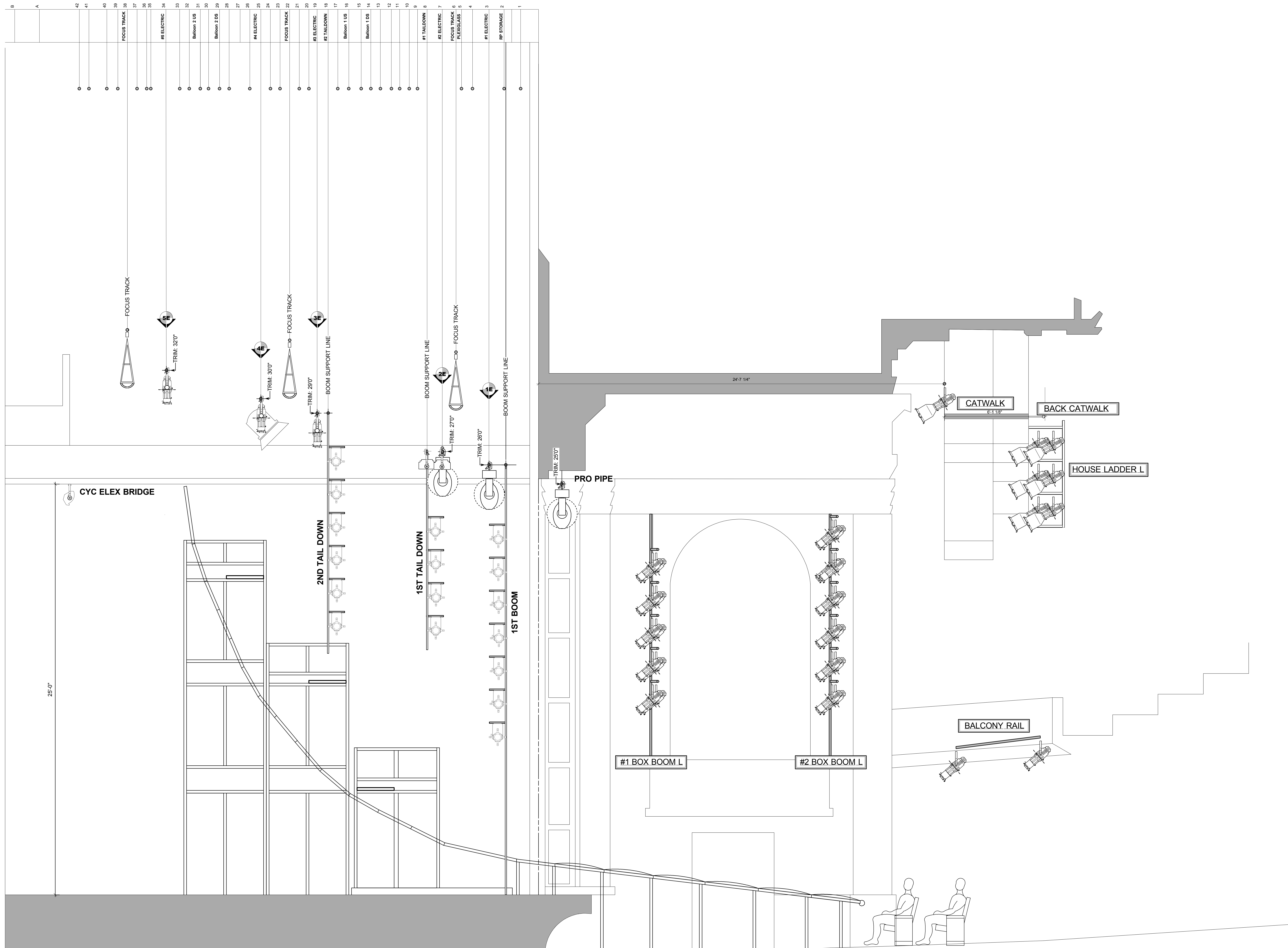


TRUE GRID HEIGHT @ +60'-0" TO GRID FLOOR



KEY TO SYMBOLS:

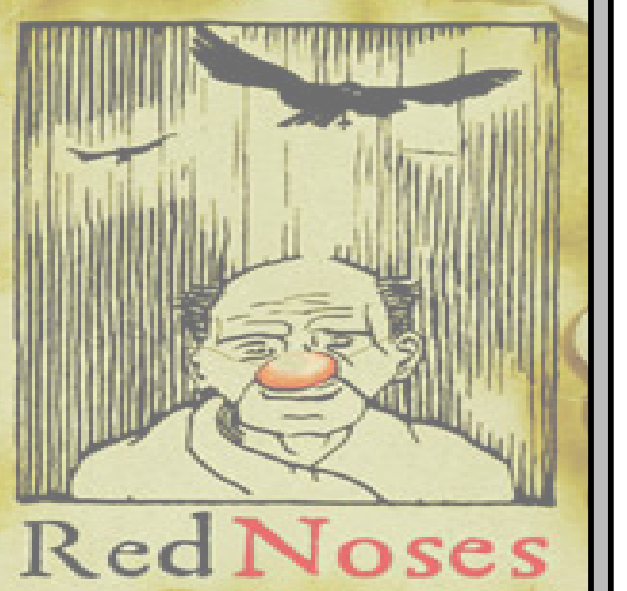
- ETC SOURCE 4 50' 575W
- ETC SOURCE 4 36' 575W
- ETC SOURCE 4 26' 575W
- ETC SOURCE 4 19' 575W
- ETC SOURCE 4 10' 575W
- ETC SOURCE 4 PAR 575W
- STUDIO 210 HOUSE LIGHT 150W
- ALTMAN FOCUSING CYC 500W
- ARRI 10" FRESNEL 9KW
- SODIUM LAMP 1KW
- HIGH END STUDIO COLOR 575W
- HIGH END STUDIO SPOT 575W
- BEAM PROJECTOR 750W
- PAR 20 (BLACK) 150W
- S4 IRIS
- 6.25" S4 HALF HAT
- WYBRON CXI COLOR SCROLLER
- HOODED LAMPS
- A-LAMPS (Yellow + Blue)

NOTATION

COLOR	UNIT #
CHANNEL #	

- NOTES:**
- BOX BOOMS HUNG ON 2'-0" PIECE OF 1 1/2" SCHED 40
 - ALL CONVENTIONAL UNITS ON 1'-6" CENTERS UNLESS OTHERWISE NOTED. ALL AUTOMATED UNITS ON 2'-0" CENTERS UNLESS OTHERWISE NOTED.
 - ALL ELECTRICS, TRUSS, LADDERS, AND BORDERS TRIM FROM STAGE FLOOR
 - POSITIONS OF BOOMS AND LADDERS GIVEN FROM CENTERLINE AND PLASTERLINE
 - PORTIONS OF ELECTRICS OFFSTAGE OF BOOMS ARE TO BE WRAPPED IN VELOUR SCRAPES.
 - PLEASE HANG/CIRCUIT ALL SPARES.
 - PLEASE PROVIDE OPERATOR CONTROL OF FOLLOWSPOTS (4).
 - PLEASE ADD CONCENTRIC RING TOP HATS TO FIXTURES 11-14.

THIS DRAWING REPRESENTS VISUAL CONCEPTS AND CONSTRUCTION SUGGESTIONS ONLY. IT DOES NOT REPLACE THE KNOWLEDGE AND ADVICE OF A LICENSED STRUCTURAL ENGINEER. THE DESIGNER IS UNQUALIFIED TO DETERMINE THE STRUCTURAL APPROPRIATENESS OF THIS DESIGN AND WILL NOT ASSUME RESPONSIBILITY FOR IMPROPER ENGINEERING OR USE.



DIRECTED BY Jim Pataca
 SCENERY BY Jeremy Barnet
 TECHNICAL DIRECTOR Kent Cyr
 COSTUMES BY Nicole Moody
 LIGHTING BY Ben Pilat
 ASSISTANT LIGHTING DESIGNER Chris Brusberg
 MASTER ELECTRICIAN Lindsay Arosberg
 ASSISTANT MASTER ELECTRICIAN Sarah Madison

LIGHTING DESIGNER CONTACT INFO
BEN PILAT
 85 Davis Rd
 Belmont, MA 02478
 617-304-6977
 pilat_ben@yahoo.com

BOSTON UNIVERSITY
 SCHOOL OF THEATER ARTS
 BOSTON MA

SCALE: 1/2" = 1'-0"
 UNLESS NOTED
 DATE: **April 8, 2007**
 REVISION: 4/8/2007
 Drafted by: CTB

PLATE #
2
 OF 4

1/2" SECTION